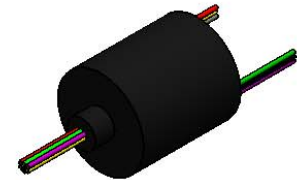
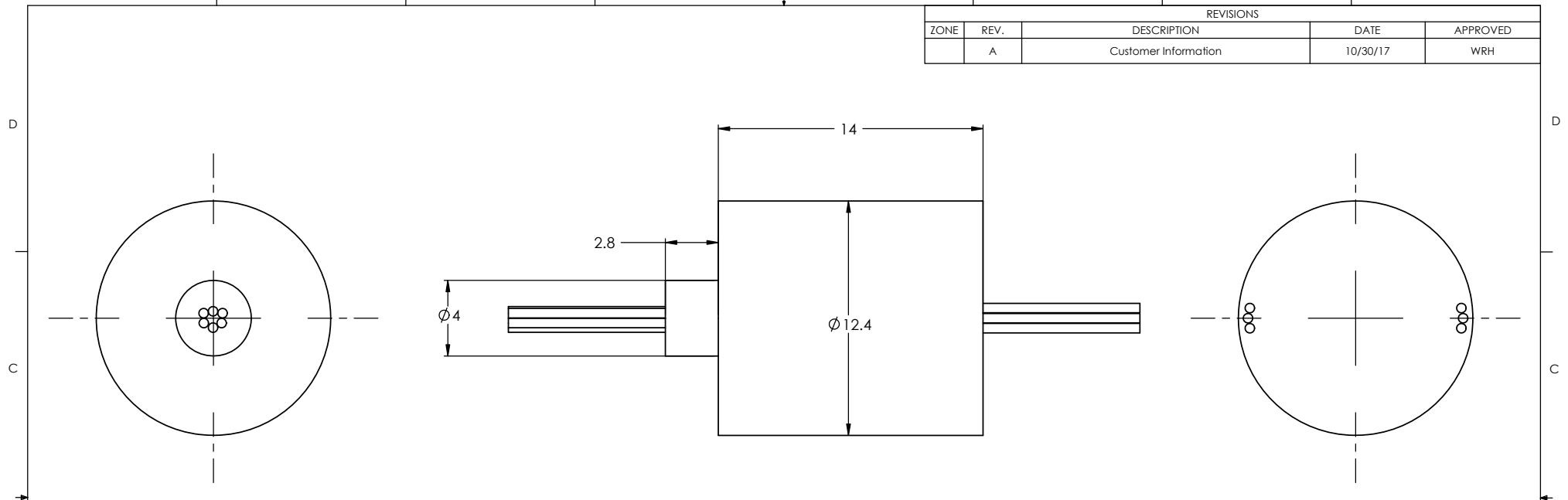
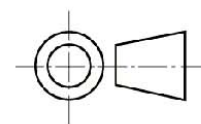


REVISIONS				
ZONE	REV.	DESCRIPTION	DATE	APPROVED
	A	Customer Information	10/30/17	WRH



TECHNICAL DATA	
NUMBER OF CIRCUITS	6
RATED VOLTAGE	240 VDC/AC
DIELECTRIC ENERGY	500VAC@50Hz
RATED CURRENT	2A/RING
OPERATING SPEED	0-300 RPM
HIGH POT	500VAC/50Hz
INSULATION RESISTANCE	1000 MΩ/500VDC
CONTACT MATERIAL SURFACE	GOLD-GOLD
LEAD	28 AWG, COLOR CODE, SILVER PLATED, PTFE INSULATED LEAD WIRES
STANDARD LEAD LENGTH	250 mm
OPERATING TEMPERATURE	-20°C - + 80°C
BEARINGS	STEEL BEARINGS
HOUSING	ABS PLASTIC
SEALING	IP51

WIRE COLOR CODE	
1. RED	2. GREEN
3. YELLOW	4. PURPLE
5. GRAY	6. BLACK



THIS DRAWING CONTAINS PROPRIETARY INFORMATION OF THE ORBEX GROUP AND MAY NOT BE IN WHOLE OR IN PART DUPLICATED OR DISCLOSED OR USED FOR MANUFACTURE OF ANY PART DISCLOSED HEREIN WITHOUT WRITTEN PERMISSION OF THE ORBEX GROUP.

**CONFIDENTIAL**

UNLESS OTHERWISE SPECIFIED:	
LINEAR DIMENSIONS	± 0.1
-5 UP TO 6	± 0.2
OVER 6 UP TO 30	± 0.3
OVER 30 UP TO 120	± 0.5
OVER 120 UP TO 400	± 0.8
OVER 400 UP TO 1000	± 1.2
OVER 1000 UP TO 2000	± 2.0
OVER 2000 UP TO 4000	± 0.5 DEG
ANGULAR	
INTERPRET GEOMETRIC TOLERANCING PER: ISO2768M	
MATERIAL	SEE CHART
FINISH	CLEAN
DRAWN	TPB 10/30/2017

**Orbex Group**

TITLE: **SLIP RING**

SIZE <b>B</b>	PRT. NO. <b>312M3-0600</b>	REV <b>A</b>
SCALE: 5:1		SHEET 1 OF 1